



**SAFETY IS
THE FIRST
STEP.**

ANDAH ROLLER SHUTTER MANUFACTURER SDN. BHD.
Never Compromise for Quality





About

ANDAH ROLLER

Established since 1997, Andah Roller Shutters has an unsettling commitment towards our product quality. We envision to create a better everyday life to people around us – our customers, the consumers and the whole community; as we believe this is the criteria for a successful shutter door manufacturer.

Based in Penang for around 2 decades, we manufacture and assembly all kinds of roller shutters, heavy duty shutters and roller grilles. Our products are made of Taiwan originated material, which is extra strong. We also have an expert team to plan and design the customize roller shutter before installing.

With a lot of experience in serving customers from different fields and industries, we are capable in giving the securing & satisfying products and services to you.

Contact us now for newsletter updates and the best deal!



VISION

To Expand Our Business Globally To
Promote Easy Assembly Roller Shutter
Door.



MISSION

- Persist In Product & Service Quality
- Passionate To Solve Customer's Problem
- Consistent Research & Development
- Be Innovative & Creative



WHY Andah?



All Type of Roller Shutter
烤漆/鉛質/透明門



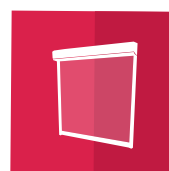
Overhead Sectional Door
工業滑升門



Repairing
維修捲門



Accessories
捲門零件

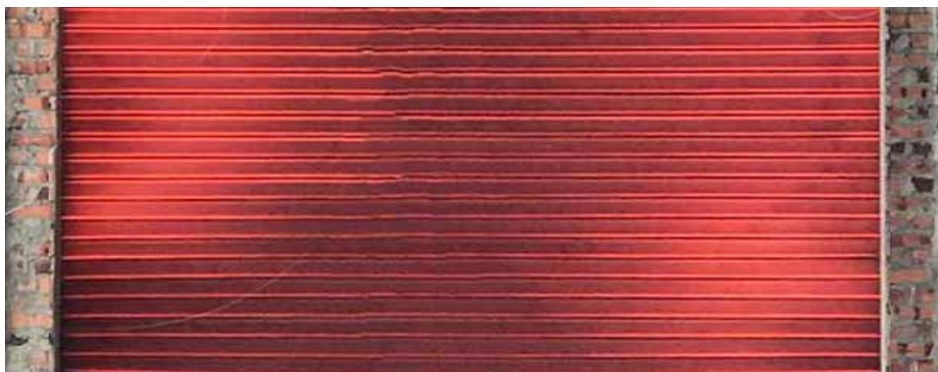


PVC High Speed Door
快速捲簾門



Fire-Rated Shutter

Total essential in protecting the safety of lives and property. These Fire-Rated Shutters can stand for 2-4 hours during Fire. It is easily operated and require minimum maintenance. It is economical yet provides essential security as well as re prevention measures.





PPGI Manual – Circle

This type of roller shutter is the most common. The operation is manual-push up the shutter for opening and pull down for closing. The counter balance springs in the drum help to carry the weight during operation.

Typical Application: Shop houses, Departmental Stall, Banks and Commercial Entrances.

PPGI Manual – Square

This type of roller shutter is the most common. The operation is manual-push up the shutter for opening and pull down for closing. The counter balance springs in the drum help to carry the weight during operation.

Typical Application: Shop houses, Departmental Stall, Banks and Commercial Entrances.



PPGI Motorised Operated

This type of roller shutter is the most common. The operation is manual-push up the shutter for opening and pull down for closing. The counter balance springs in the drum help to carry the weight during operation.

Typical Application: Shop houses, Departmental Stall, Banks and Commercial Entrances.



Manual Perforated Roller Shutter

The New Look. "SEE-THRU" perforated roller shutter door is a break through in roller shutters technology and design. The 2-3mm perforation provide good visibility, air flows, and steel "SEE-THRU" shutter doors not only enhance as beauty and brightness in areas

where security is the prime need. Full views and brightness can be seen from outside even at long distances.

Typical Application: Shopping complexes if these shops or arcades are centralize air-cond system.



Motorised/ Chain Block Perforated Roller Shutter

The New Look. "SEE-THRU" perforated roller shutter door is a break through in roller shutters technology and design. The 2-3mm perforation provide good visibility, air flows, and steel "SEE-THRU" shutter doors not only enhance as beauty and brightness in areas

where security is the prime need. Full views and brightness can be seen from outside even at long distances.

Typical Application: Shopping complexes if these shops or arcades are centralize air-cond system.



Heavy Duty Shutter

Security Shutter is one of the shutter to prevent burglar. The thickness of the curtain slate is 1mm and it is operated by motor. There are 3 types of colour can be applied. They are Powder Coating, Pre-painted and Natural Galvanised Iron (G.I). These shutters are commonly installed at warehouse.

Roller Shutter Types

- Motorised Operated
- Chain Block Operated



Aluminium Roller Shutter

This type of roller shutter is the most common. The operation is manual-push up the shutter for opening and pull down for closing. The counter balance springs in the drum help to carry the weight during operation.

Typical Application: Shop houses, Departmental Stall, Banks and Commercial Entrances.

Roller Shutter Types

- Manual Operated
- Motorised Operated
- Chain Block Operated





Aluminium Roller Grilles (AG1)

Roller Drum: Solid drawn steel tubing encasing helical springs of super-grade spring wire revolving on a steel axle. Designed to give minimum deflection over the particular span. The slatted curtain comprises interlocking slats rolled from aluminium grilles. Malleable iron end clip secure slats laterally and take up end side were in side channels

Roller Shutter Types

- Manual Operated
- Motorised Operated
- Chain Block Operated



Aluminium Roller Grilles (AG2)

Roller Drum: Solid drawn steel tubing encasing helical springs of super-grade spring wire revolving on a steel axle. Designed to give minimum deflection over the particular span. The slatted curtain comprises interlocking slats rolled from aluminium grilles. Malleable iron end clip secure slats laterally and take up end side were in side channels

Roller Shutter Types

- Manual Operated
- Motorised Operated
- Chain Block Operated



Aluminium with Acrylic Shutter

Andah Version I shutter is formed up with Acrylic panel and aluminium slats. Passers by and potential customers can window shop after closing hours and any unauthorized personal (e.g. Burglary in action) can be seen and reported to the authorities.

Roller Shutter Types

- Manual Operated
- Motorised Operated
- Chain Block Operated



Polycarbonate Transparent

Polycarbonate Transparent shutter are designed to provide security and elegance. Transparency suitable for advertising products while the shop are closed. Andah Version II is assembled from 3mm thick Polycarbonate together with aluminum frame and lock with plastic end cap. It can operated either manually or motorized.

Typical Application: Shopping complexes if these shops or arcades are centralize air-cond system.

Roller Shutter Types

- Manual Operated
- Motorised Operated
- Chain Block Operated



PVC Speed Doors

- Fast activation, more efficient
- Airtight design, saving energy
- Silence operation, easy maintain

Suitable for

Food factory, chemical plant, electronics factory, textile factory, freezer, cold storage, printing plant, supermarket, automobile assembly factory, logistics and warehousing.





Folding Polycarbonate

- Low maintenance closure system
- Ideal for mall, shop fronts and airports
- Design enables large spans
- Flexible to support curved layouts
- Only 42mm head room with no floor track required

Presentation

- Natural anodized as standard
- Powder coat finish

Operation

- Manual operation on all models (slide side)
- no requirements for motor or springs

Compaction

- For opening over 3000mm wide typically the panels will compact to between 11-15% of the opening size





Overhead Sectional Doors

Andah Roller Sectional Door offer a comprehensive range of overhead sectional door options. It is available in galvanized steel with high grade polyester coating on both sides.

The door feature 40mm and 50mm thick section, with triple-layer construction and superior polyurethane insulation. Item SF40S is finger protection panels with continuous thermal break and air seal between sections. Featuring engineered components and fitting the entire door is designed to provide reliable performance and years of service. As the garage door is an integral part of home's design, architecture and security, our garage door feature a range of style, colors, and options that will be the perfect fit for your home.

- Max available panel length : 12m
- Available panel width : 440 _ 550mm, adjusted
- Available steel thickness : 0.3mm – 0.6mm

Typical Application: use in warehouses, logistic centres, shops and other production plants to ensure a high degree of insulation at the façade of the installation.

Accessories & Parts



43mm Pully



AD Shutter Lock



Aluminium Bottom Bar
With Rubber



Bearing & Cap



Bracket Sprocket



Bottom Bar



Chain



Center Mullion Bracket



Centre Mullion



IP Camera



Japan Lock



Manual Guide Rail



Motor Guide Rail



Perforated
(see-thru)



Push Button
Switch & Box



Roller Shutter Operator
SA-Series



Roller Shutter Operator
SB-Series



Rolling Code Remote
Transmitter



Remote Control



Spring



Slat



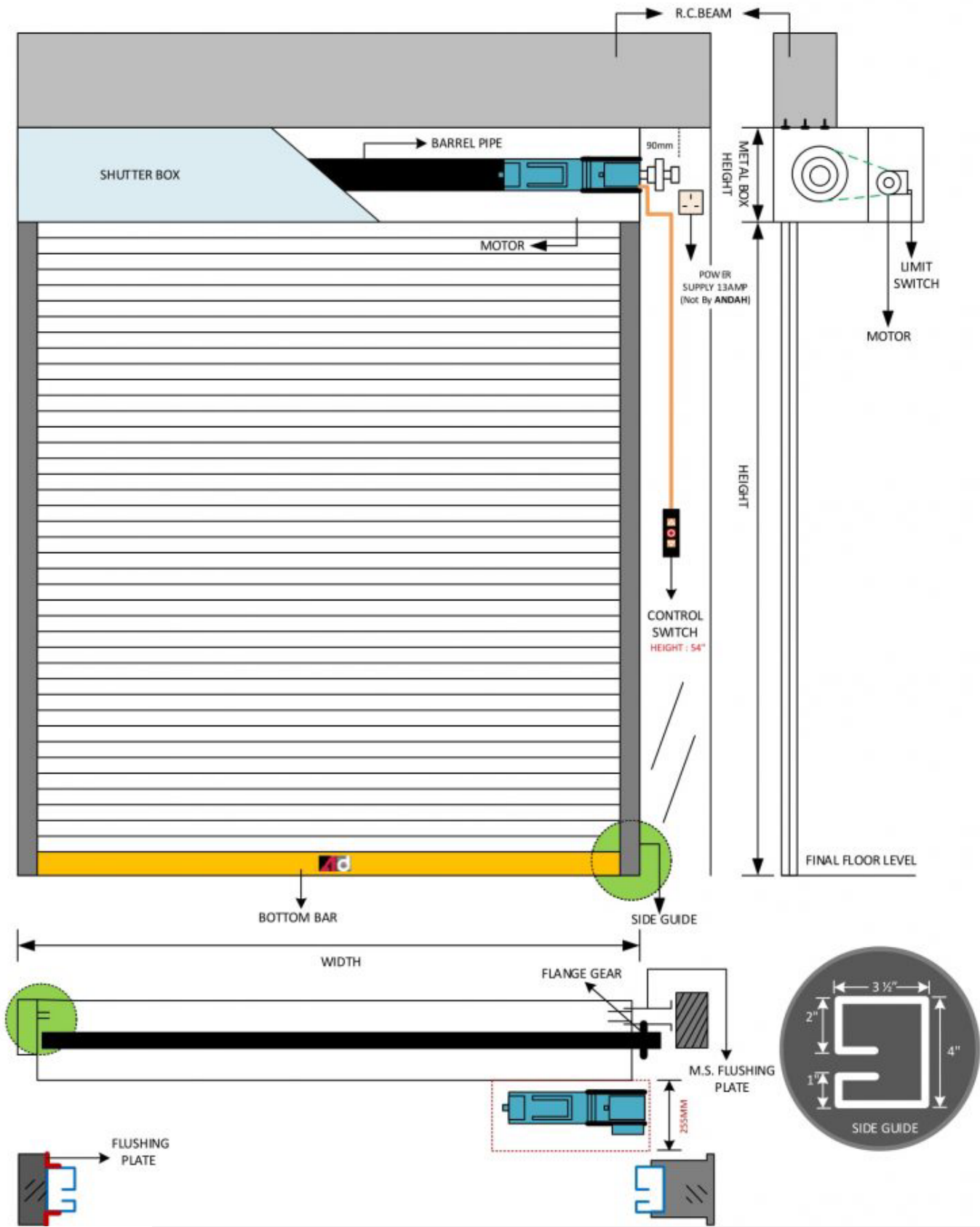
Switch Button Box



Under Lock
(Special Lock)

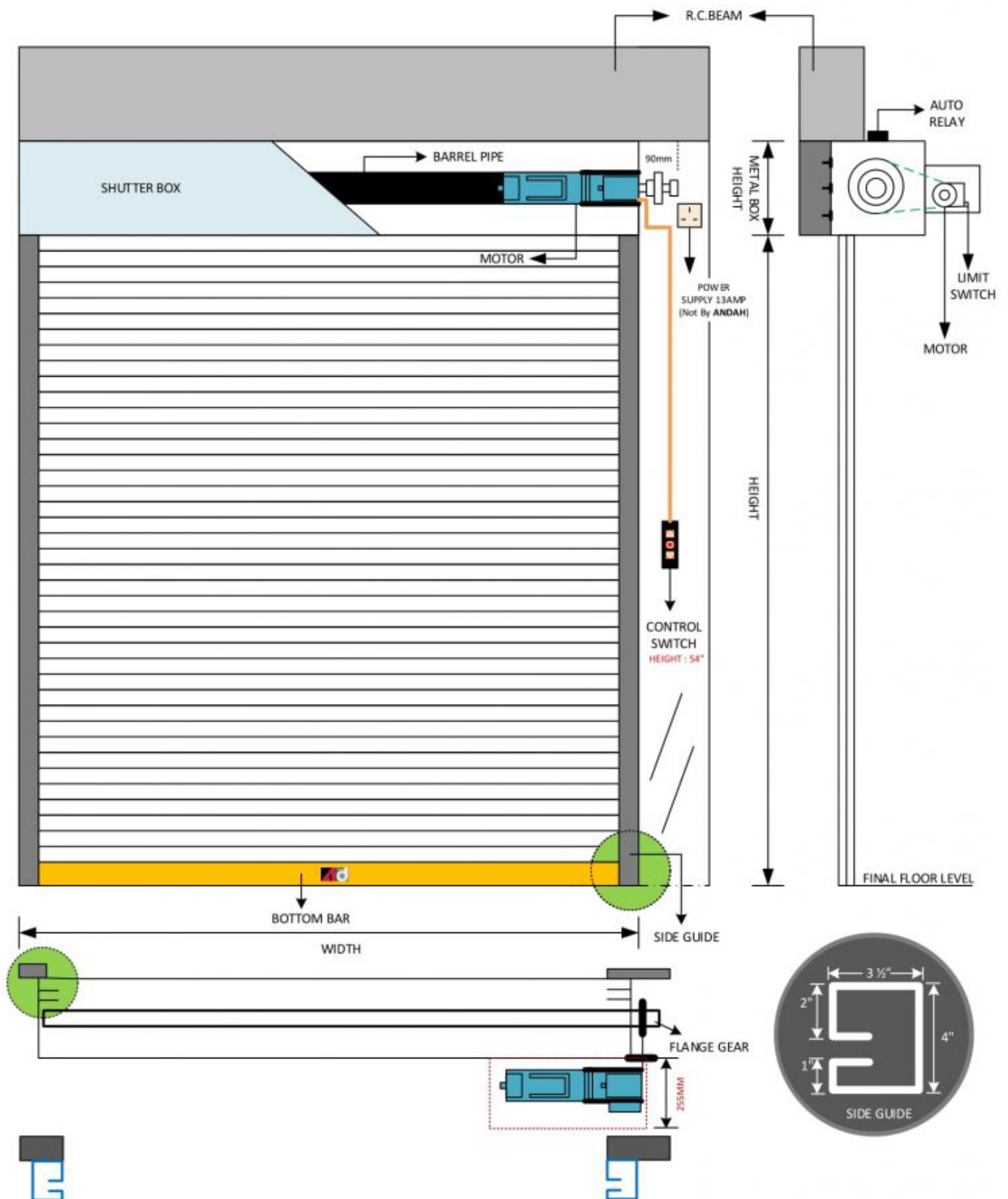


Shutter Drawing Motor



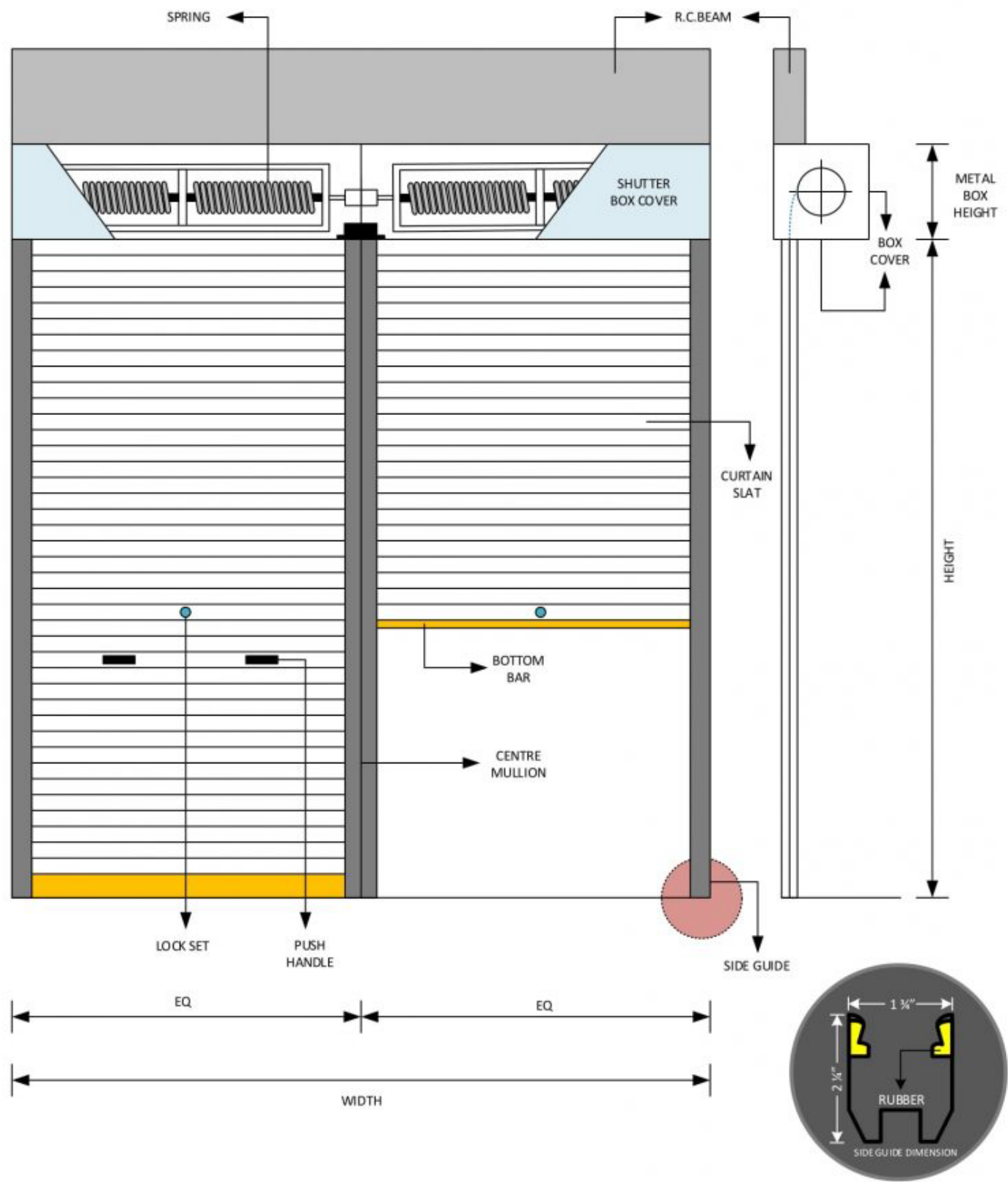
Motor Operated Type

Shutter Drawing 2h Fire Shutter



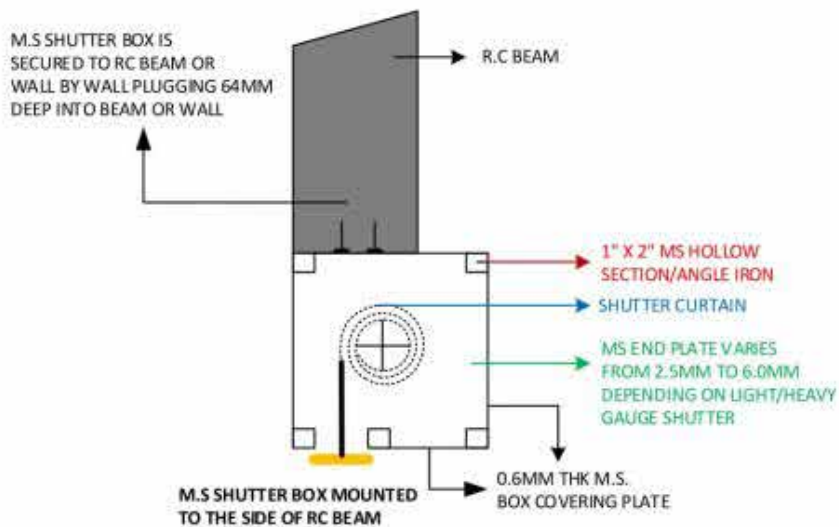
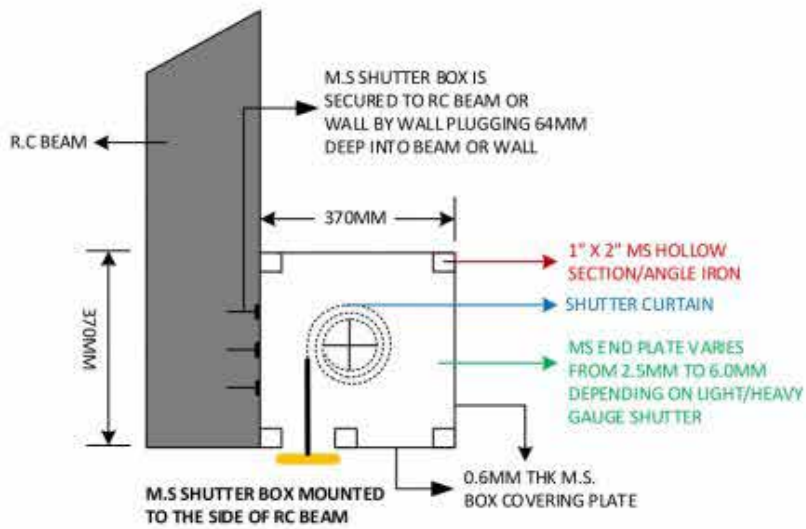
2-4Hours Fire Rated
Roller Shutter

Spring Shutter Drawing



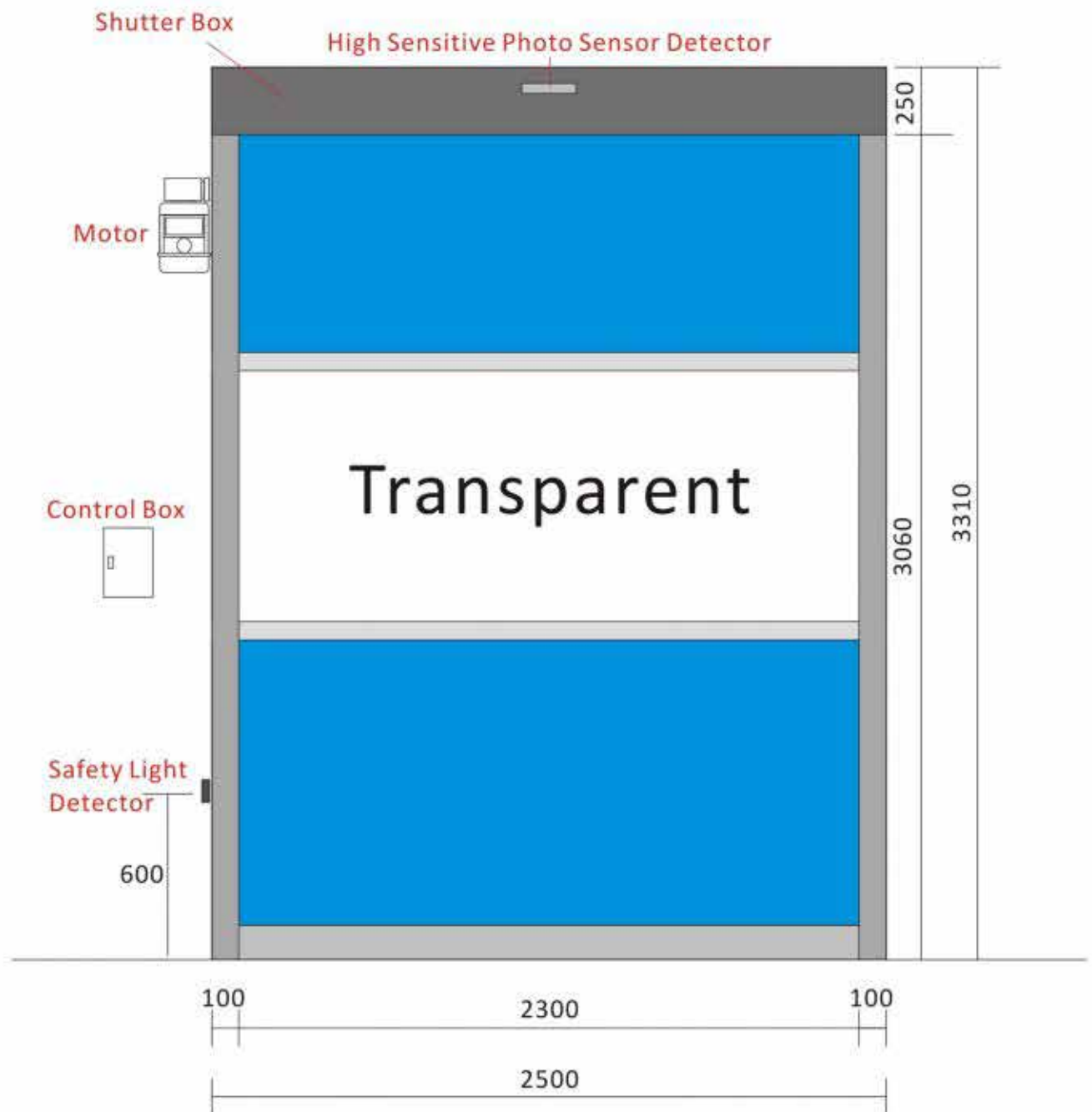
Spring Operated Type

Shutter Box Drawing



Shutter Box Drawing

PVC Auto Fast Door



The height of Shutter Box: 250mm
The width of Stainless Steel Guide Rail: 100mm

Smart and Safe High Speed Roller Shutter Doors

Anti-robbery function, Attractive appearance, Roller shutter is the premium product highly recommended by architect and designers.

PRODUCT CHARACTERISTICS

High Speed & Silent Operation

DC motor combined with excellent small space line, the non-metal silencer fasten the speed in silent mode.

Attractive and durable

Professional anti-rust technology enhances the appearance of roller, making it durable and acid alkaline proof.

Automatic and safe

During descending and ascending, shutter stops immediately upon encountering any pressure. Safe, anti-pressure and anti-clutch.

Easy handling during power failure

Can be switched to manual operation during electricity cut-off.

Easy tuning

Rights managed high speed localization system - allow minor tuning without applying any tools.

Additional functions

Set to combine with central control system, surveillance camera, UPS (Uninterruptible Power Supply), smoke detector, alarm system etc, to form a complete security system.



ANDAH ROLLER SHUTTER MANUFACTURER SDN. BHD.

📍 No. 383, Jalan Juru, Bukit Mertajam,
14000, Seberang Perai, Pulau Pinang, Malaysia

☎ 04-507 9124

✉ andahroller@yahoo.com

